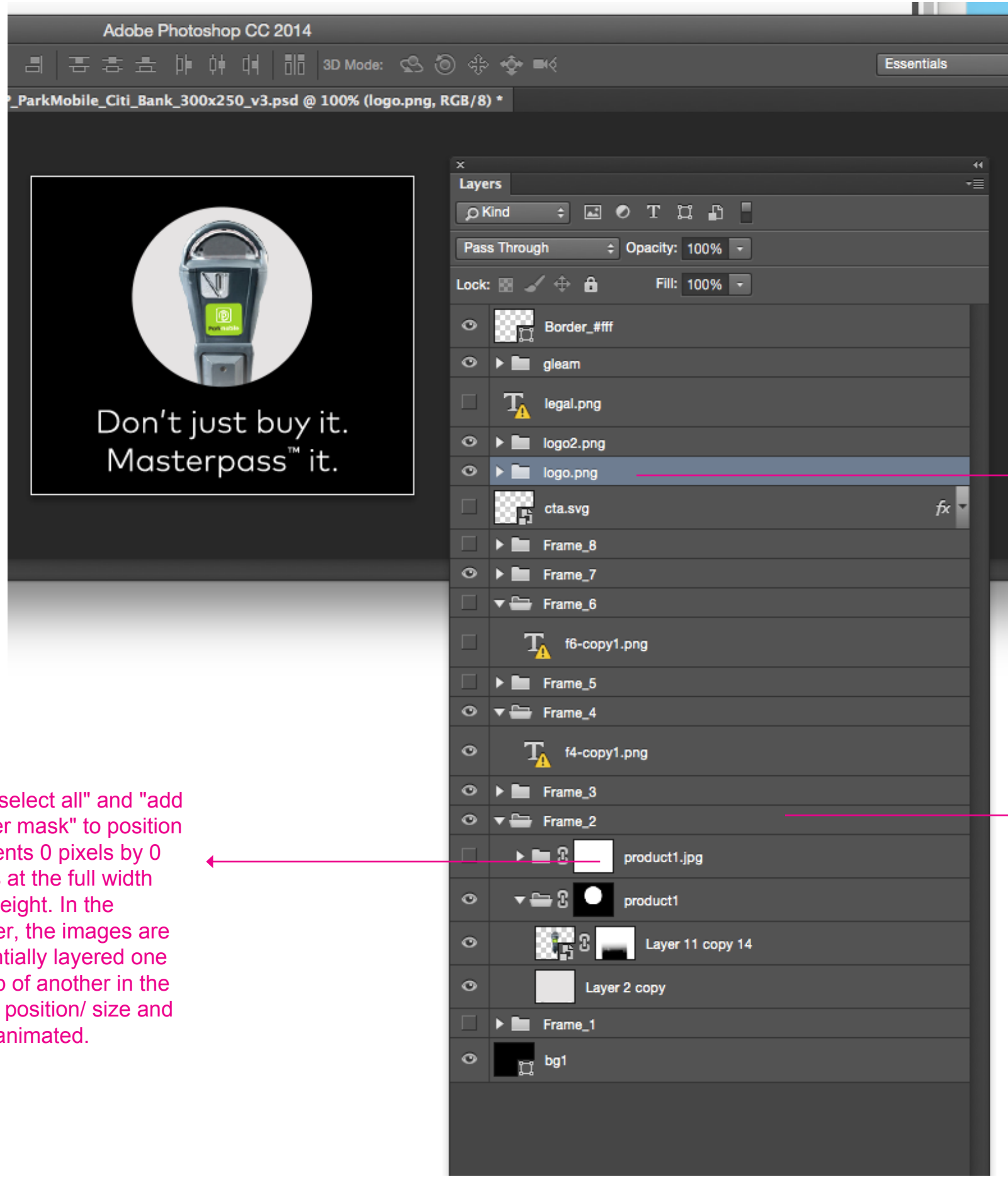
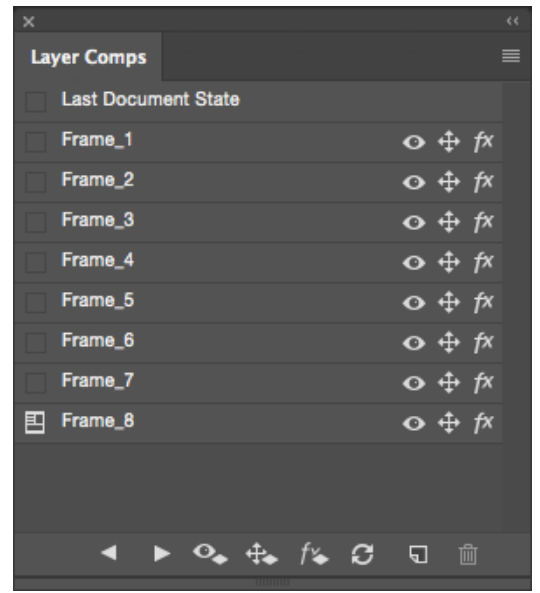


Visual is Sample of a banner PSD



Use "select all" and "add a layer mask" to position elements 0 pixels by 0 pixels at the full width and height. In the banner, the images are essentially layered one on top of another in the same position/ size and then animated.



Use layer comps and provide storyboards.
Using layer comps makes is much easier for developers and creative to cycle through animation frames. Storyboards can be made by clicking on a layer comp and exporting a static frame.

Make sure you do not change naming conventions for layers that will be used for dev.
Examples:
logo.png
legal.png

The photoshop tool will automatically export out the iamges as they are named if they have the file extention.

Note: folders can also have a file name, the contents of a folder will be exported as one image. e.g. static.jpg

Recommended to group frame contents into folders

Please do not leave extra or unused layers, a developer will be confused and will not know which assets are to be used in a banner.